

MAC 550 profile


Martin



The new MAC 550 was born out of the conscious drive by Martin to consistently improve and innovate; to economize without compromise; and to listen to the needs of the lighting industry.

In the MAC 550, the consequence of this energetic pursuit is unprecedented illumination for a 400W fixture, astounding graphics and animation, all wrapped within the award winning design of the MAC 2000.

Never before has such speed of effects or head movement been available in a mid-sized fixture.

Never before has an array of animation and design possibilities been found outside of the MAC 2000 Series.

Color
The MAC 550 features two color wheels, each with eight slots plus open. As with all products in the MAC family, ergonomics and functionality are paramount. In the MAC 550, the color selection may be changed with ease to offer you a seemingly limitless array of color combinations.



Optics

Powerful 400W illumination, enhanced by a multi-layered, dichroic reflector, gives the MAC 550 unprecedented optical efficiency.

Advances in lamp technology have allowed a significant and measurable amplification to lumen output, far surpassing the MAC 550's peers.



Gobos

Glass, textured glass or metal gobos fit within a six-position rotating gobo wheel, (plus open) and a nine-position static gobo wheel, (plus open).

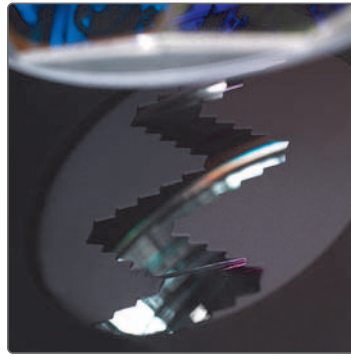
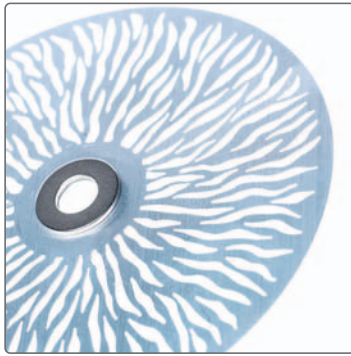
The gobo system permits 16-bit control for extreme accuracy with all gobos easily interchangeable, removing any obstacle to your creativity.

Gobo Animation

The MAC 550 features a DMX controlled gobo animation system - unique to a mid-sized luminare.

It is specially engineered to create animated effects such as clouded skies, reflective seas and flames. The system comes complete with one animation wheel, with further wheels available to expand your library.

Each wheel is quickly changed via a magnetic coupling without the use of tools.

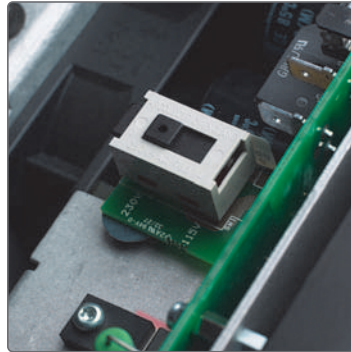
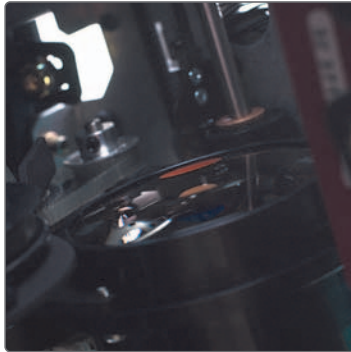


Dimmer/Shutter

A full range dimmer/shutter is very accurate and allows for smooth color and effect transitions by varying the intensity of the light output. Accelerated strobe effects are possible up to 20 Hz.

Zoom & Focus

The MAC 550's variable motorized zoom and focus expands the beam continuously from 14° - 30° with high precision and sharpness.



Electrical Power Supply

A switchable power supply covers worldwide voltages and frequencies allowing the fixture to operate anywhere in the world.

Iris & Prism

A bi-directional, 3-facet prism rotates at variable speeds, adding unique effects to gobo projection. The prism can also be replaced giving lighting professionals further options for customization.

A motorized iris allows you to resize the beam quickly and accurately for fast effects with smaller beam sizes.

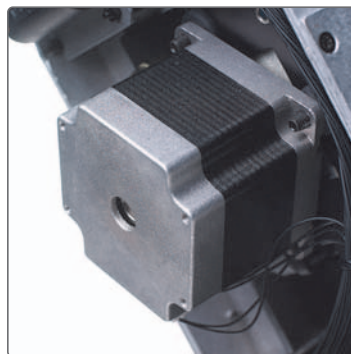


Transportation

The Martin flight case, designed for the MAC family, is recognized in the industry as one of the best purpose-built cases for the transportation of lighting fixtures. Made of durable ply, it is covered in a tough water-repellent coating for added protection.

Modular design

The design of the MAC 550 is unashamedly inspired by the larger MAC 2000. This award winning design is highly efficient, making service and maintenance easier with fast access to modules and critical components.



Pan/Tilt

New pan and tilt motors give faster-than-ever movement for a mid-sized fixture, with a pan movement of 540° and a tilt range of 246°

The MAC 550 employs an intelligent position correction system that automatically returns the luminare to its original position, should it accidentally be knocked out of place. A multi position, tilt lock mechanism is also featured to permit easy maintenance and handling.

Silence

The MAC 550 contains head and base temperature sensors to ensure that fan speeds are kept to a minimum; bringing noise levels right down to suit theatre and TV studio applications.



Communications

The MAC 550 is DMX512-controllable, equipped with both 3-pin and 5-pin XLR in/out sockets, and totally compatible with coming future standards such as ACN or Ethernet-based protocol.



PHYSICAL

- Length: 450 mm (17.7 in)
- Width: 365 mm (14.4 in)
- Height: 636 mm (25.0 in)
- Weight: 31 kg (68 lbs)

BEAM EFFECTS

- High speed replaceable rotating 3 facet prism
- Motorized iris, 8 or 16 bit control

DIMMER/SHUTTER

- full-range dimming
- variable speed flash, 8- or 16 bit control

COLOR

- 2 Motorized Color Wheels, each fitted with 8 replaceable colors, plus open 8- or 16-bit control

PAN/TILT

- Pan: 540 degrees
- Tilt: 246 degrees with 16 bit control
- Position correction system.

GOBOS

- Rotating gobos: 6 positions plus open with continuous and indexed rotation, 16-bit control
- Static gobos: 9 positions plus open, 8-bit control

GOBO ANIMATION WHEEL

- Vertical, horizontal or diagonal animation effects.
- Indexed and variable speed continuous rotation, 8 or 16-bit control

FOCUS

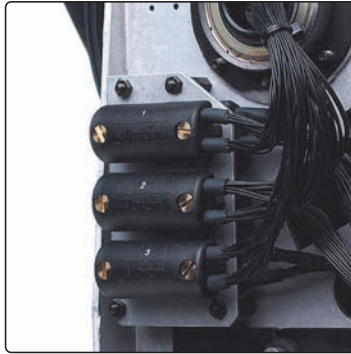
- Motorized focus from 2m to infinity 8- or 16-bit control

ZOOM

- 14° - 30°, 8- or 16-bit control

OPTICS

- Light output: 9300 lumens
- Glass cold light reflector



BEAM ANGLE

- (focused on open gobo): 14° - 30°
- Focal length: 46 - 100 mm Measurement source: OSRAM HTI 400 W/D3

SOURCE

- Lamp: 400 W short arc discharge
- Base: Double-ended Sfc 10-4 with key
- Approved models: OSRAM HTI 400 W/D3
- Ballast: electronic

CONSTRUCTION

- Housing: UV-resistant fiber-reinforced composite shell
- Shock resistant chassis
- Ergonomic carrying handles
- Colors: black
- Protection factor: IP 20

CONTROL

- Protocol: USITT DMX-512
- Control channels: 21 or 27
- Receiver: Opto-isolated RS-485
- Data I/O: locking 3-pin & 5-pin XLR, pin 1 shield, pin 2 cold (-), pin 3 hot (+)
- Setting and addressing: LED control panel, remote w/ MP-2 uploader
- Movement control: tracking and vector
- Software installation: serial upload (MUF)

COOLING

- Low noise cooling
- Fan speed regulation mode
- Maximum ambient temperature (Ta): 40° C (104° F)
- Maximum surface temperature: 160° C (320° F)
- Total heat dissipation: 2200 BTU/hr

RIGGING

- Mounts in any orientation with 1 or 2 clamps
- Convenient 1/4 turn fastener clamp attachment
- Stands directly on the floor

ELECTRICAL

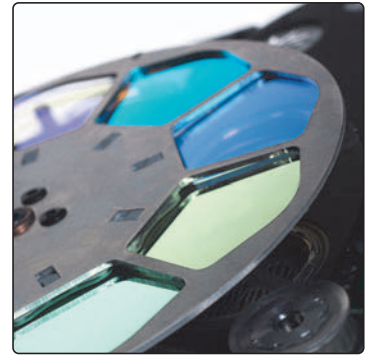
- AC input: 3 m trailing cable w/o cord cap
- Operating ranges: 90-130/200-260 V, 50/60 Hz
- Power supply: semi auto-ranging electronic switch-mode
- Main fuse for 200 - 250 V AC: T 6.3 A
- Main fuse for 100 - 120 V AC: T 10 A

INCLUDED ITEMS

- Lamp: OSRAM HTI 400/D3 (installed)
- Fuse for use with 200 - 260 V power: T 6.3 A fuse (installed)
- Fuse for use with 90 -130 V power: T 10 A
- Clamp attachment brackets: 2 quarter-turn Omega
- Gobo animation wheel
- Radial breakup (installed)
- Color filters: 16 pieces (installed)
- Gobos: 13 aluminum, 2 glass (installed)
- User manual
- Martin Cables

ACCESSORIES/OPTIONS

- Spiral breakup animation wheel: P/N 62325049
- Linear breakup animation wheel:



P/N 62325050

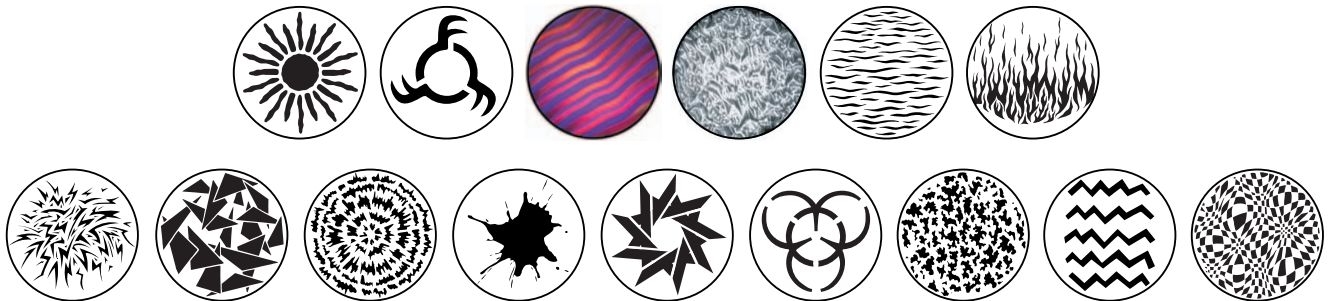
- Coarse tangential animation wheel: P/N 62325051
- Half-coupler clamp: P/N 91602005
- G-clamp: P/N 91602003
- MAC 500-size stock gobos: see www.martin.com

ORDERING INFORMATION

- MAC 550 Profile in cardboard: P/N 90217000
- MAC 550 Profile in flight case: P/N 90217010

MAXIMUM POWER AND CURRENT

Magnetic ballast				
Volt	Hz	Watt	Amp	power factor
100 V	50 Hz	319 W	3.8 A	PF 0.8
100 V	60 Hz	317 W	3.4 A	PF 0.9
120 V	50 Hz	320 W	2.9 A	PF 0.9
120 V	60 Hz	314 W	2.7 A	PF 1.0
208 V	50 Hz	320 W	1.9 A	PF 0.8
208 V	60 Hz	319 W	1.7 A	PF 0.9
230 V	50 Hz	323 W	1.6 A	PF 0.9
230 V	60 Hz	326 W	1.5 A	PF 1.0
250 V	50 Hz	326 W	1.5 A	PF 0.9
250 V	60 Hz	325 W	1.4 A	PF 1.0



Martin